

Windows: Setting up Remote Desktop

You can request the **Remote Desktop service** with the corresponding form. After your request is processed, you can operate your own desktop at the university from any PC, Mac or even tablets and smartphones.

This manual describes the configuration of Remote Desktop Connection in Windows. This application is part of all Windows versions up to Windows 8.1. For Windows10, iOS, Android and OSX (Mac) separate manuals are available.

Look up computer name

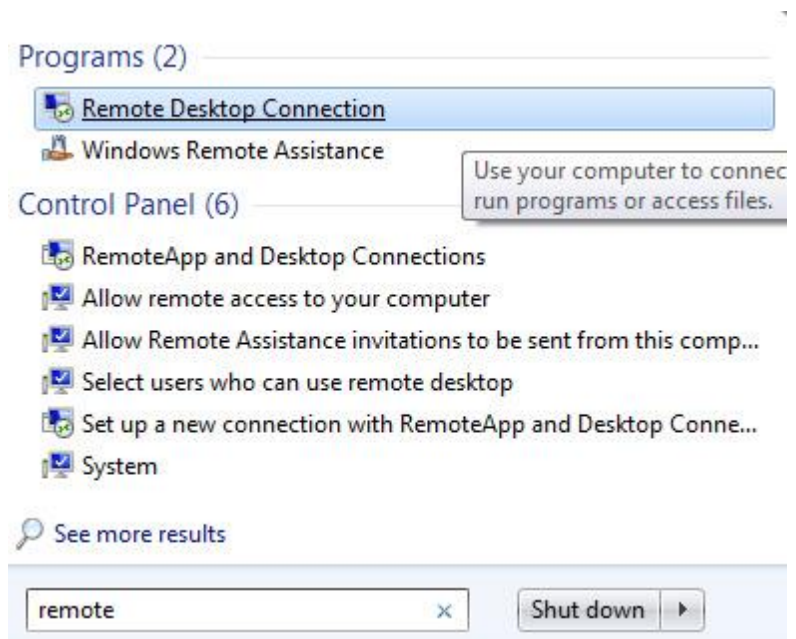
To contact the PC workplace at the university, you have to know the computer name of your PC workplace. You can look up this name as follows:

1. Open the Windows Start menu and in the right column choose Computer. This opens the standard file explorer.
2. In the bottom left of the explorer window you find a computer-symbol and the name of the computer. This name starts with a W, followed by a number, for example W0065241. Write down this name, so you have it at hand during the next steps in this manual

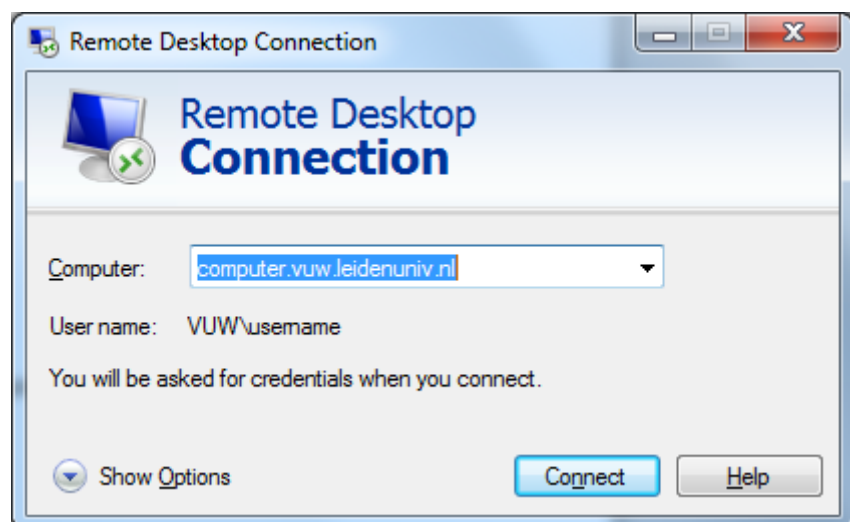
Configuration of Remote desktop

You can configure the Remote Desktop Service on your (home) PC with the native Windows application **Remote Desktop Connection** as follows:

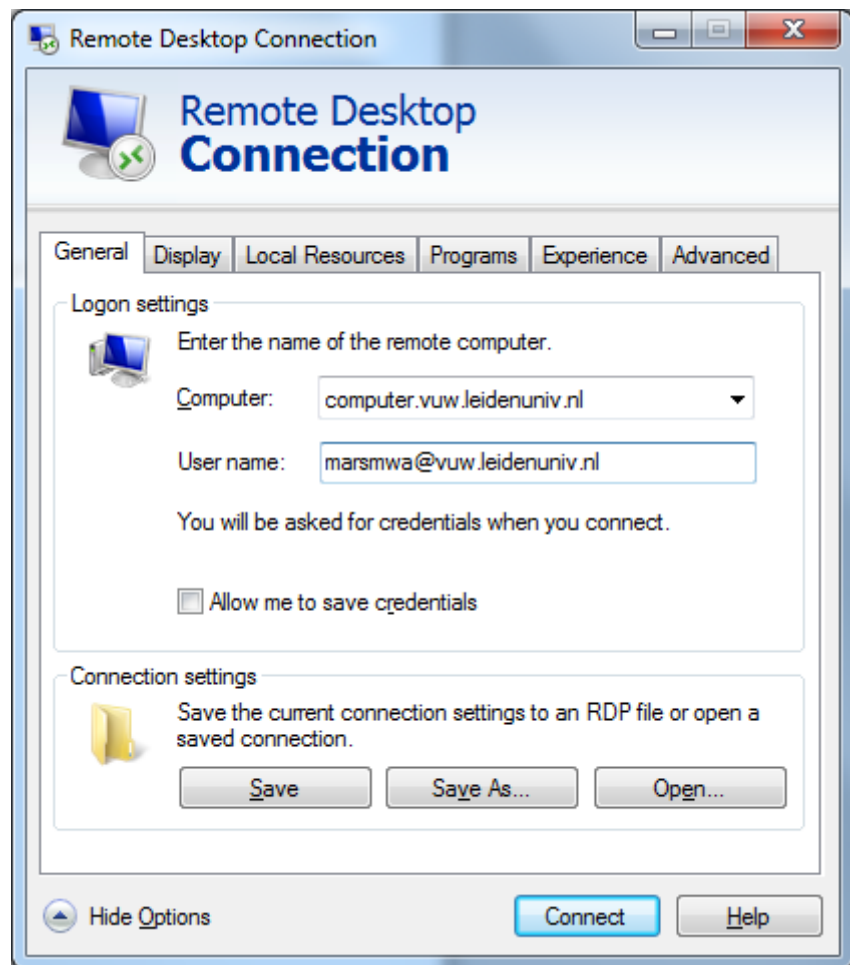
1. Open the Windows Start menu and type in the search bar: **remote**. The search results appear immediately:



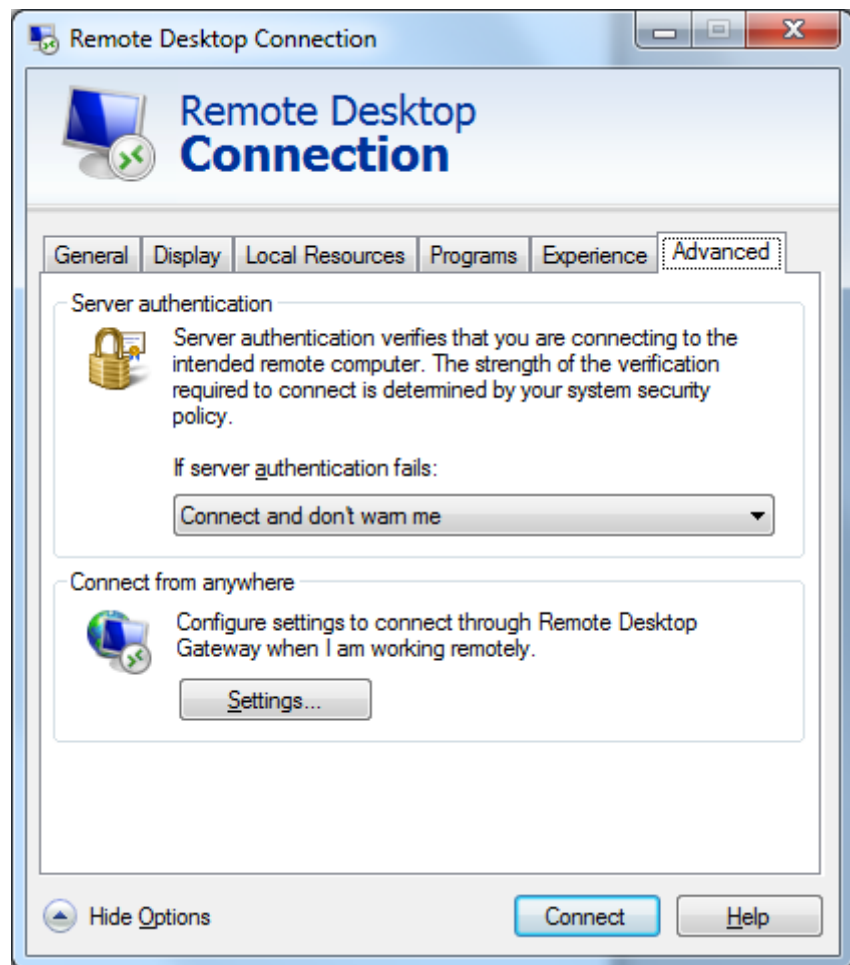
2. Click the application **Remote Desktop Connection**. This opens the following window.



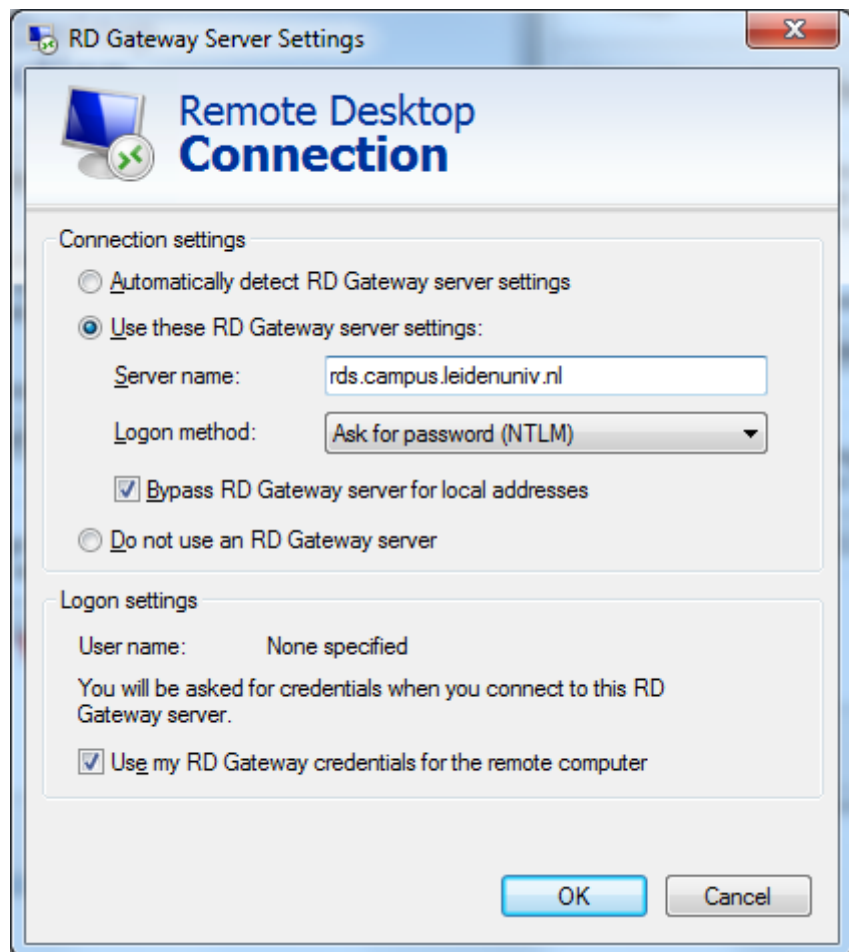
3. Click **Show Options** to open the options window:



4. Enter these fields:
Computer: *your computer name.vuw.leidenuniv.nl*
User name: *your username@vuw.leidenuniv.nl*
5. Then, select the **Advanced** tab:



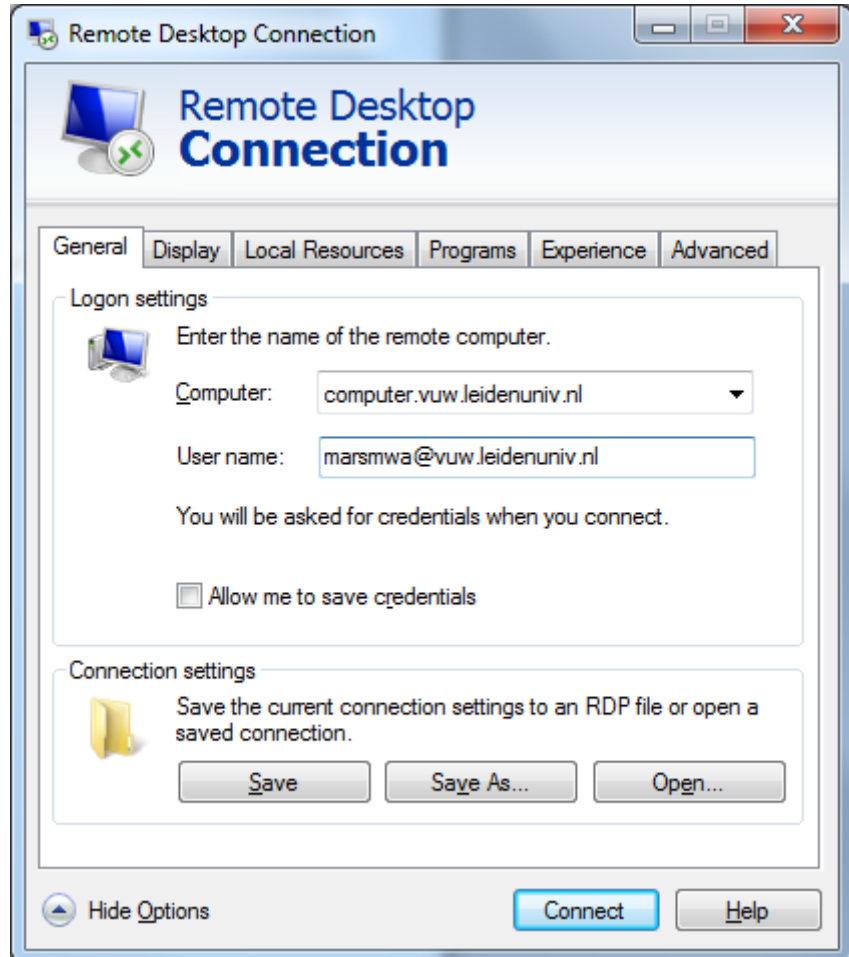
6. Click **Settings...**



7. Select **Use these RD Gateway server settings** and enter:
 - **Server name:** rds.campus.leidenuniv.nl
 - **Logon method:** Ask for password (NTLM)
 - Check **Bypass RD Gateway server for local addresses**
 - Check **Use my RD Gateway credentials for the remote computer**Confirm the configuration settings with [OK]

Save configuration for future use

You can save the configuration settings you just made for future use after returning to the **General** tab.



Click **Save As**, give the file a logical name, such as 'Mydesktop.rdp' and save it, for example on the desktop.

Start a Remote Desktop session

Once you saved the configuration settings in an rdp-file, you can easily start a Remote Desktop session to your workplace by double clicking the rdp-file. When requested, enter your usual ULCN-user name, preceded by 'vuw\' (without the quotes). Use your normal password.

NOTE: It may take several minutes before you get a first reaction from the desktop on your work place. Reason for this is, that the university desktops are shut down automatically after a period of inactivity. When you contact your desktop at the university via Remote Desktop Connection, it is restarted automatically. During the automatic restart, a message appears, telling you that the desktop cannot be found.